

SubliNova G7

SEC Tech. Data_E_140826

SubliNova G7 Technical Data

GENERAL INFORMATION

InkTec has been providing high quality dye sublimation inks for many years based on our own dispersed technology. InkTec's dye sublimation inks provide high intensity colours because the particles are spread evenly. To produce InkTec dye sublimation inks, we evaluate the key factors of ink - durability, colour and light fastness - by using hi-tech methods.

ABOUT THE SUBLINOVA

'SubliNova' is the brand name of InkTec's dye sublimation ink. This name is derived from the words 'Sublimation and

SubliNova is easily recognizable as a sublimation ink whilst also highlighting the innovation that went into producing it.

APPLICATIONS

- Polyester and polyamide fabrics, spandex, lycra, nylon used in sports apparel and outdoor clothing
- Plastic substrates like skis, snowboards, skateboards and surfboards
- Mixed synthetic fabrics(used in sports apparel and outdoor clothing) with a minimum polyester content of 60%



TRANSFER CONDITION

SubliNova transfer time can vary from 30 ~ 60 sec.
at 180°C ~ 210°C depending on the type of substrate.



SUBLINOVA G7

SubliNova G7 mainly targets for printers equipped with Epson DX7 printhead.

The key feature of SubliNova G7 is the outstanding printability.

It can be printed for longer hours at high-speed print mode and allows to cut corners the production costs.

PRIMARY FEATURES

- Suitable for the plotters equipped with Epson DX5, DX7 printhead
- Superior print quality and stability at high speed mode
- Outstanding printability for longer hours
- Suitable for use with various transfer paper
- Environmentally friendly : Free from formaldehyde, VOCs and compliance with RoHS

TABLE OF FASTNESS PROPERTIES

Excellent fastness properties are just a few of SubliNova G7's competitive advantages.

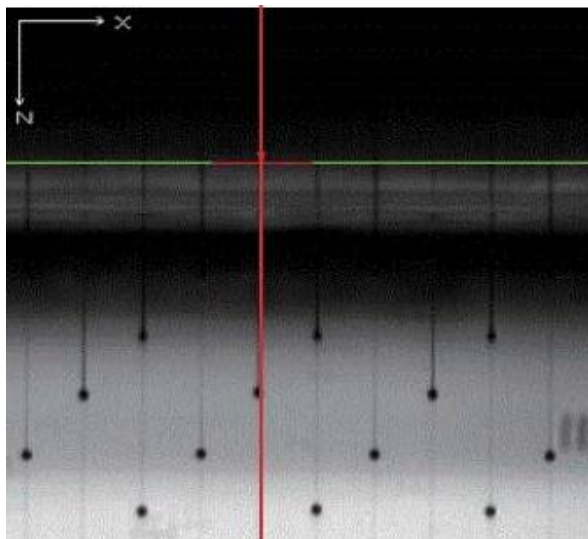
Content Colour	Transfer Condition		Light Fastness	Wash Fastness	Alkali Perspiration Fastness
			ISO 105-B02:2013(160h) Rating 1~7	ISO 105-C06:2010(40°C) Rating 1~5	ISO 105-E04:2013 Rating 1~5
● HD Black	180°C / 60sec	200°C / 30sec	6/7	4/5	4/5
● Cyan	180°C / 60sec	200°C / 30sec	3/4	4/5	4/5
● Magenta	180°C / 60sec	200°C / 30sec	5	4/5	4/5
● Yellow	180°C / 60sec	200°C / 30sec	7	4/5	4/5

OUTSTANDING PRINTABILITY

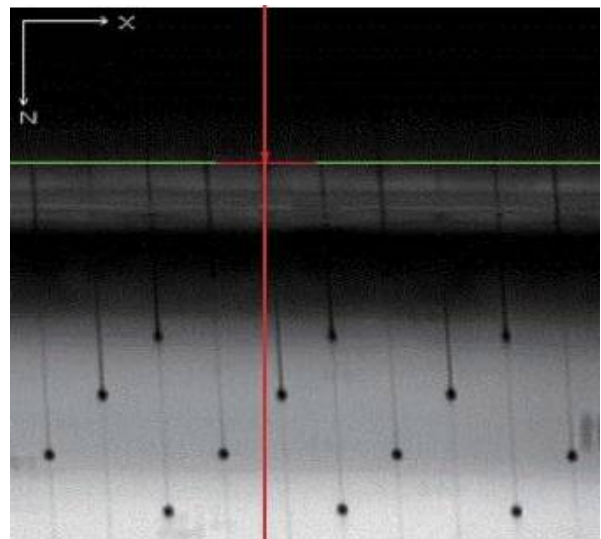
Even running at high speeds for long periods of time the ink is guaranteed not to deflect and maintains its jetting straightness.

This means less down-time for routine maintenance resulting in greater profitability and productivity.

1) SubliNova G7



2) J Company



ECO FRIENDLY

SubliNova G7 is an environmentally friendly product using only high-class dyes and its excellent quality has been proved by an international testing agency.


ROHS FREE

Test results for RoHS

All test results are 'Not detected', as authorised by SGS(<http://www.sgsgroup.kr/en>).

Colour	Content	Cadmium(Cd)	Lead(Pb)	Mercury(Hg)	Hexavalent Chromium(Cr VI)
	HD Black	N.D.	N.D.	N.D.	N.D.
●	Cyan	N.D.	N.D.	N.D.	N.D.
●	Magenta	N.D.	N.D.	N.D.	N.D.
●	Yellow	N.D.	N.D.	N.D.	N.D.


**FORMALDEHYDE & VOCs
FREE**

Test results for formaldehyde & VOCs(Volatile Organic Compounds)

Formaldehyde and VOCs can cause serious health problems.

All test results are 'Not detected', as authorised by SGS(<http://www.sgsgroup.kr/en>).

Colour	Content	Formaldehyde	VOCs
	HD Black	N.D.	N.D.
●	Cyan	N.D.	N.D.
●	Magenta	N.D.	N.D.
●	Yellow	N.D.	N.D.

PRODUCT OFFERING

Colour	440ml Cartridge	1L Pack	1L Bottle	20L Bottle
HD Black	SEC-C440MHB	SEC-P01LHB	SEC-B01LHB	SEC-B20LHB
● Cyan	SEC-C440MC	SEC-P01LC	SEC-B01LC	SEC-B20LC
● Magenta	SEC-C440MM	SEC-P01LM	SEC-B01LM	SEC-B20LM
● Yellow	SEC-C440MY	SEC-P01LY	SEC-B01LY	SEC-B20LY
● Cleaning Solution	SWA-C220M(220ml)		SWA-B01L	SWA-B20L

Note: The information contained in this technical data sheet are based on our present experience and knowledge.
In consideration of the various factors which can effect the results achieved in the final application, InkTec doesn't take any responsibility for an improper use of the product by the user which can violate or damage rights of third parties.